

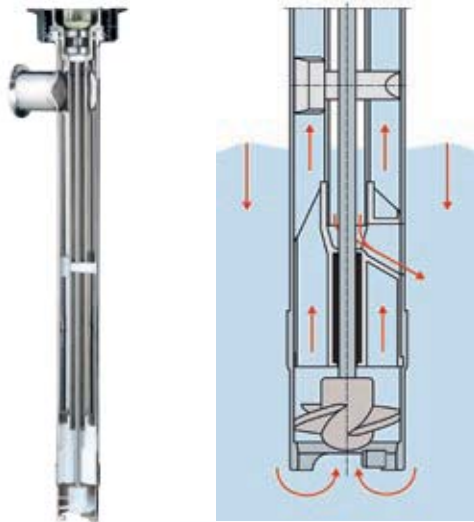
# Technical Data Sheet

Drum pumps F/FP 427



More than just pumps

## Drum pumps F/FP 427



### Advantages/characteristics:

- ▶ Ideal as a hygienic pump
- ▶ Minimised dead spot areas
- ▶ No seal in liquid zone
- ▶ Can be easily dismantled into individual parts for cleaning
- ▶ Can be disassembled virtually without tools
- ▶ Radial shaft seal rings prevent vapours and liquid from penetrating into the coupling area
- ▶ Simultaneous storage of shaft and inner tube with plug-in bearing
- ▶ All parts that come into contact with the medium can be sterilized
- ▶ Also pumps solids-laden fluids, e.g. fruits with pulp, soups with spices



Technical data/type	F 427 S3	F 427 S4	FP 427 S FOOD	F 427 S 3A
Seal type	No seal in liquid zone			
Version	With impeller for max. flow rate			
Pressure-side connection	Thread G 1 1/4 A	Thread Rd 58 x 1/4	Clamp 1 1/2"	
<b>Materials</b>				
Pump	Stainless steel 316 Ti			
O-Ring <sup>2)</sup>	FKM			
Shaft	Stainless steel			
Impeller	ETFE	Stainless steel		ETFE
<b>Dimensions</b>				
Outer tube diameter / Impeller diameter (mm)	43/38			
Standard immersion depth	27", 39", 47" (700 mm, 1000 mm, 1200 mm)			
Other immersion depths / special lengths <sup>3)</sup>	8" - 78" (200 - 2000 mm)			
<b>Operating range</b>				
Container	Drums, IBCs, tanks, canisters, hobbocks, mixing containers etc.			
Media temperature	32 - 212°F (0 - 100°C)			
Ambient temperature	-4 - 104°F (-20 - 40°C)			
Weight Ø 43, ID 1000 mm	6.4 lbs (2.9 kg)			
<b>Certificates</b>				
Food approvals	-	 EG 1935/2004 FDA CFR 21		 3A-version
Silicone-free version	-			
<b>Performance data<sup>1)</sup></b>				
	<b>Impeller</b>			
Flow rate max.	63 GPM (240 LPM)			
Delivery head max.	42 ft (13 m)			
Viscosity max.	1000 cPs			

1) Depending on pump version, media and motor

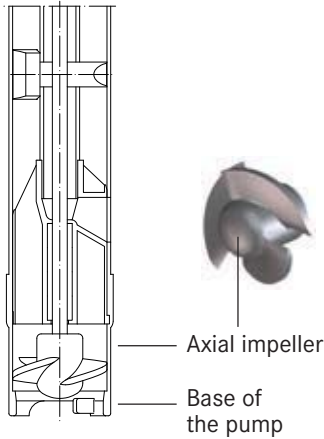
2) Other materials available on request

3) In gradations of 100 mm

# Design, function and dimensions

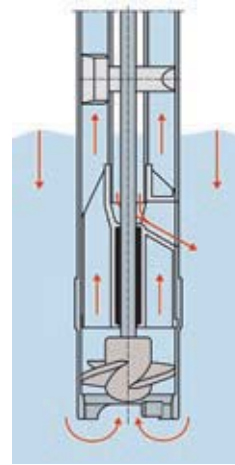
## Drum pumps F/FP 427

### Design:



F/FP 427 with bearing housing and axial impeller

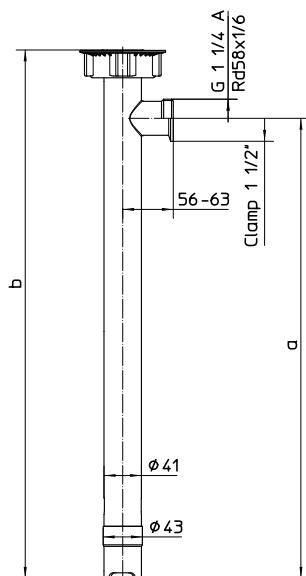
### Function:



F/FP 427 with relief opening for optimum outflow of medium

### Dimensions:

#### Drum pump F/FP 427



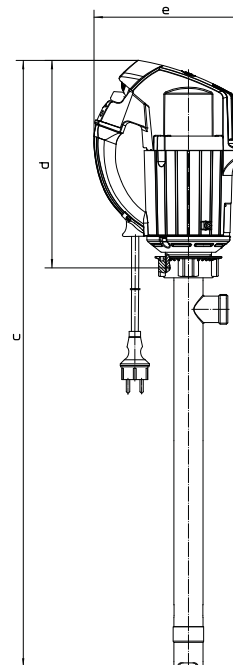
#### Standard immersion depth (ID)

Ø (mm)	ID (mm)	a (mm)	b (mm)
43	700	715	790
	1000	1015	1090
	1200	1215	1290

#### Other immersion depths (ID)

$a = ID + 15$  and  $b = ID + 90$

#### Drum pump with motor



#### F/FP 427 with motor

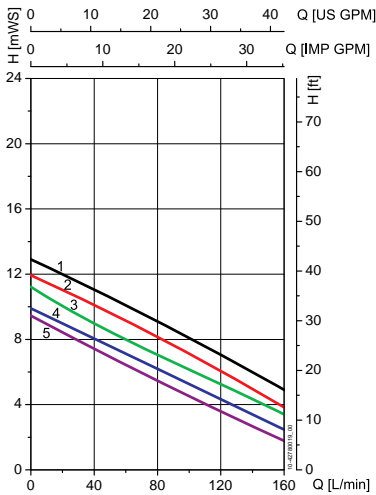
Motor type	c (mm)	d (mm)	e (mm)
FEM 4070	b + d - 16	207	186
F 457 (EL)		225	217
F 458 (-1, EL)		292	209
F 460 Ex (-1, EL)		292	209
FBM 4000 Ex		292	209
F 416 Ex		119	230
F 416-1 Ex		101	120
F 416-2 Ex		101	120

# Performance diagrams<sup>1)</sup> & part numbers

## Drum pumps F/FP 427

The performance diagram applies to the Ø 38 impeller and the indicated motors, for all pipe types respectively.

### Axial impeller Ø 38



- 1) F 416 Ex, F 416-1 Ex, F 416-2 Ex (6 bar)
- 2) F 457, F 457 EL, F 458-1, F 460-1 Ex
- 3) FBM 4000 Ex
- 4) FEM 4070
- 5) F 458, F 458 EL, F 460 Ex, F 460 Ex EL

### Part numbers:

Standard immersion depths										
Type	Material			Diameter (mm)		Part no.				
	Pump	Shaft	O-Ring	Ø outer tube	Ø impeller	27" (700 mm)	39" (1000 mm)	47" (1200 mm)	60" (1500 mm)	
F 427 S3, Connection thread G 1 ¼ A	Standard	S	FKM	43	38	427 20 307	427 20 310	427 20 312	427 20 315	
F 427 S4, Connection thread Rd 58 x ½						427 20 407	427 20 410	427 20 412		
F 427 S5, Connection Clamp 1 ½"						427 20 507	427 20 510	427 20 512		
FP 427 S, Connection Clamp 1 ½"						FOOD	427 20 607	427 20 610	427 20 612	
F 427 S 3A, Connection Clamp 1 ½"						3A	427 20 207	427 20 210	427 20 212	

Other immersion depths/other O-rings/other connections on request

Hose connections						
with union nut G 1 ¼ and Rd 58 x ½ for standard versions and clamp 1 ½ for FOOD- and 3A-version						
Connection and/or connection thread	Connection	Material			Size	
		Union nut	Seal	3/4" (DN19)	1" (DN25)	1-1/4" (DN32)
Standard G 1 ¼	Stainless steel (S) 316 Ti	Stainless steel	-	959 04 062	959 04 063	959 04 064
Milk tube screw fitting 58 x ½		-	-		959 04 115	
Clamp 1 ½, FOOD-version		-	FKM	959 04 171	959 04 169	
		-	NBR	960 04 172	960 04 170	
Clamp 1 ½, 3A-version		-	-	959 04 138		

1) Determined with water at 68°F (20°C), measured values ± 10 % maximum flow rate with open discharge outlet

# Accessories

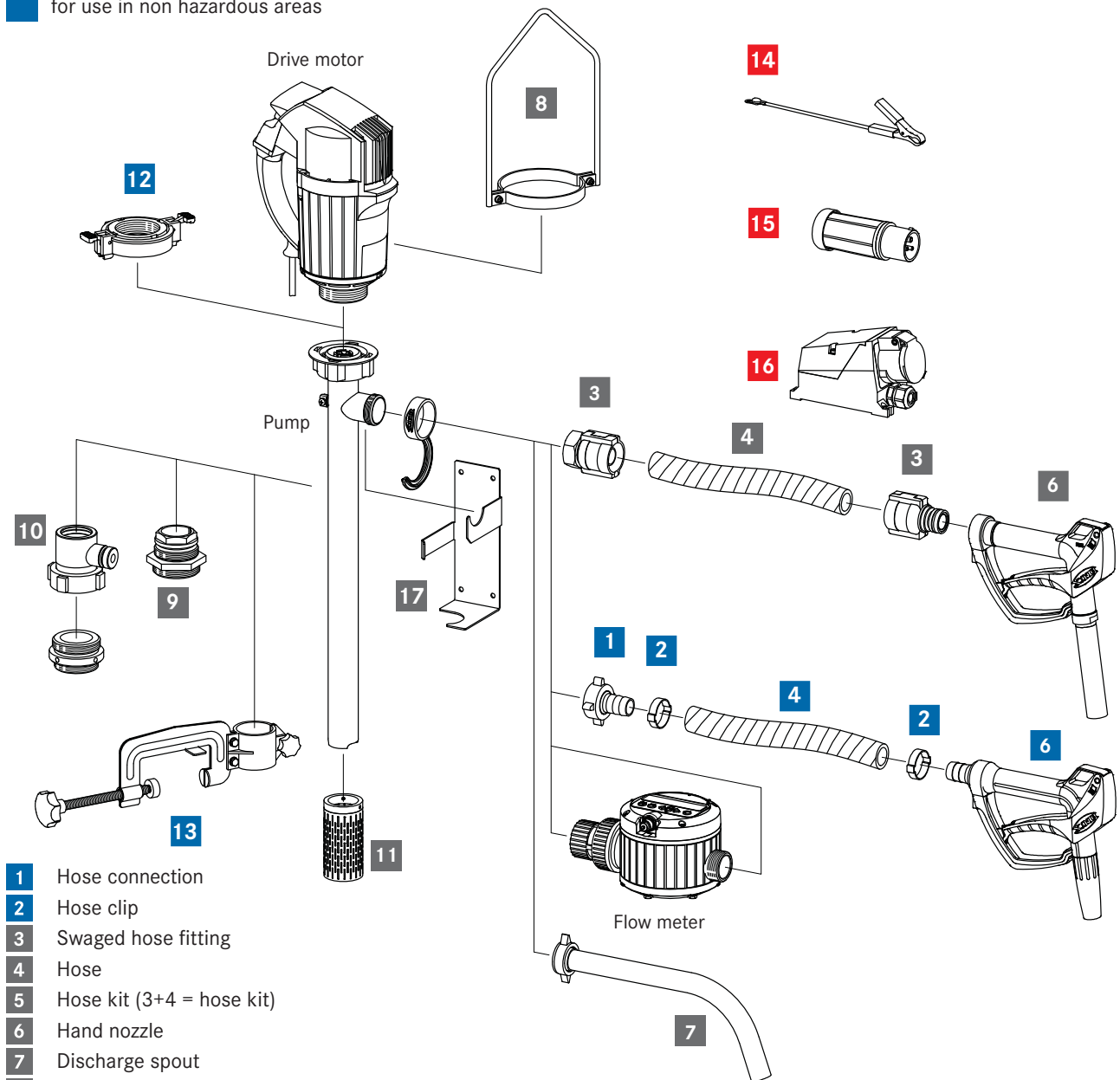
## Drum pumps F/FP 427

### Accessories for drum pump F/FP 427

Compatible with drum pumps from the F/FP 427 series, we offer a wide selection of accessories, for example, compression glands, hoses, hand nozzles. More information can be found in the FLUX accessory brochure, in the price list or on our homepage: [www.flux-pumps.com](http://www.flux-pumps.com).

- for use in hazardous areas
- for use in non hazardous areas

- for use in hazardous and non hazardous areas



- 1 Hose connection
- 2 Hose clip
- 3 Swaged hose fitting
- 4 Hose
- 5 Hose kit (3+4 = hose kit)
- 6 Hand nozzle
- 7 Discharge spout
- 8 Carrying handle
- 9 Compression gland
- 10 Fume gland
- 11 Suction strainer
- 12 Quick action coupling
- 13 Attachment clamp
- 14 Earth (ground) wire
- 15 Explosion-proof plug
- 16 Explosion-proof socket
- 17 Wall bracket

### FLUX PUMPS CORPORATION

300 Townpark Drive, Suite 110  
 Kennesaw, GA 30144, USA  
 Phone 800-367-3589  
[info@fluxpumpsusa.com](mailto:info@fluxpumpsusa.com)  
[www.fluxpumpsusa.com](http://www.fluxpumpsusa.com)