

Technical Data Sheet

Fume Glands & Related Accessories



More than just pumps

FLUX fume gland

prevents emission of high aggressive fumes while pumping out of drums which can cause damage on human beings or the environment

The fume gland consists of a valve part and a threaded ring. For use with a drum pump.

- Valve part in polypropylene (PP), o-ring in FKM

	pump-Ø	part no.
w/ball valve	25 mm	10-00114309
w/ball valve	32 mm	10-00114313
w/ball valve	40 mm	10-00114181
w/ball valve	41 mm	10-00114182
w/ball valve	50 mm	10-00114243

For use with a gas compensation hose, hose nozzle (10-95913128) is required.



- Threaded ring in polypropylene (PP), flat seal in FKM

connection thread	pump-Ø	part no.
G 2 male	25/32/40/41 mm	10-00114218
S 57 x 4 male	25/32/40/41 mm	10-00114224
S 60 x 6 female	25/32/40/41 mm	10-00114228
S 70 x 6 female	25/32/40/41 mm	10-00114226
S 70 x 6 male	25/32/40/41 mm	10-00114232
BCS 70 x 6 male	25/32/40/41 mm (w/o-ring)	10-00114236
G 2 A male	50 mm	10-00114238
S 70 x 6 male	50 mm	10-00114267
S 70 x 6 female	50 mm	10-00114269
CC 64 x 5 male	40/41 mm	10-00114230
CCS 64 x 5 female	40/41 mm	10-00114271
CCS 64 x 5 male	50 mm	10-00114265



- Valve part in stainless steel 316 Ti (S)

	pump-Ø	part no.
w/ball valve, o-ring FEP	41 mm	10-00114192
w/ball valve, o-ring FEP	50 mm	10-00114253
o-ring FKM	28 mm	10-00114319
w/gas compensation nozzle G 3/8	41 mm	10-00114194
w/gas compensation nozzle G 3/8	50 mm	10-00114245



- Threaded ring in stainless steel 316 Ti (S), flat seal in PE

connection thread	pump-Ø	part no.
G 2 male	28/41 mm	10-00114325
S 57 x 4 male	28/41 mm	10-00114329
G 2 male	50 mm	10-00114331



- Threaded ring in brass, nickel-plated (MS), flat seal in PE

connection thread	pump-Ø	part no.
G 2 male	41 mm	10-00114327
G 2 male	50 mm	10-00114333

Union joint hose

DN 10 (PP) for mounting onto valve part PP, S, MS when using a gas compensation nozzle

	part no.
G 1/4 male	10-95913128



PE-corrugated hose

DN 10 for gas compensation hose

	part no.
outer-Ø 13 mm	10-00110061



NBR-hose

for gas compensation hose, DN 10 electrically conductive

	part no.
outer-Ø 17mm	10-00110098



Fume cone

PP, weight: 0,10 kg

	part no.
for longer outlet tube Ø 20 mm	10-00114285
for outlet Ø 24 mm	10-00114296



Technical Data Sheet

Fume Glands & Related Accessories - Overview



More than just pumps



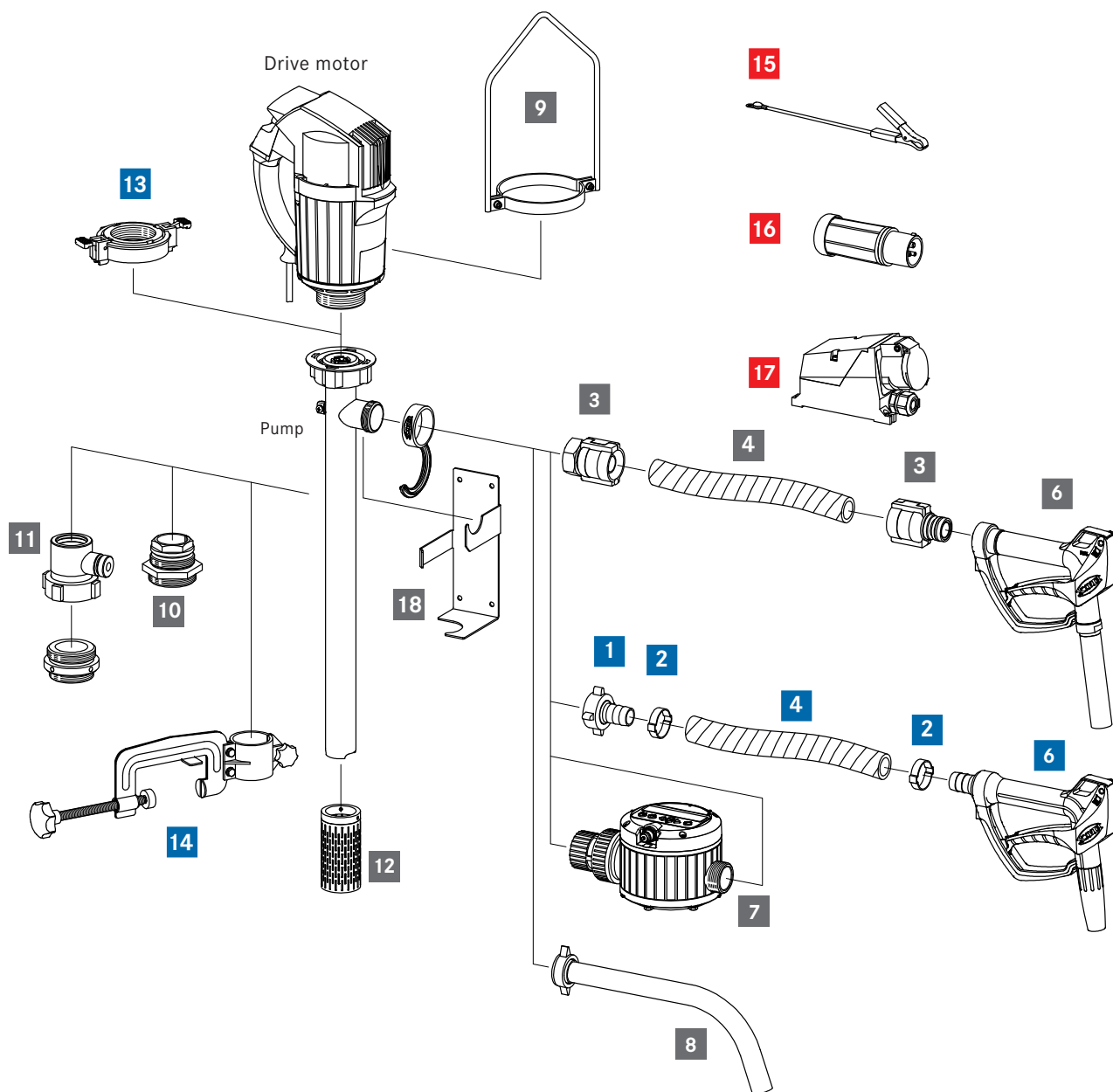
hazardous areas



non-hazardous areas



for use in both areas



		Page			Page
1	Hose connection	6	10	Compression gland	14
2	Hose clip	7	11	FLUX fume gland	15
3	Swaged hose fitting	9, 10	12	Suction strainer	16
4	Hose	11	13	Quick action coupling	14
5	Hose kit (3+4 = hose kit)	8	14	Attachment clamp	17
6	Hand nozzle	12, 13	15	Earth (ground) wire	18
7	Flow meters	XX	16	Explosion-proof plug	19
8	Discharge spout	16	17	Explosion-proof socket	19
9	Carrying handle	17	18	Wall bracket	17

FLUX PUMPS CORPORATION

300 Townpark Drive, Suite 130

Kennesaw, GA 30144, USA

Phone 800-367-3589

info@fluxpumpsusa.com

www.fluxpumpsusa.com