

Technical Data Sheet

FMC100 Flow Meter in Stainless Steel Construction

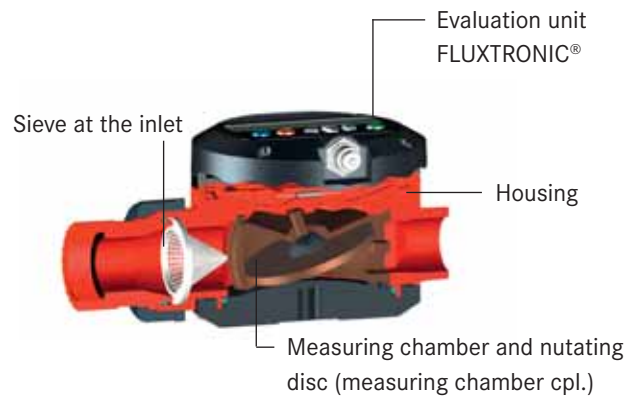


More than just pumps




Advantages/characteristics:

- ▶ Nutating disc design
- ▶ For low-viscosity to medium-viscosity media
- ▶ With integrated digital display unit
FLUXTRONIC®
or available as pulse version
- ▶ Depending on type for use with drum pump or for use in piping
- ▶ Flow rate of 2.64 - 26.4 GPM (10 - 100 l/min)
- ▶ High accuracy and repeat accuracy
- ▶ Signal transduction at FLUXTRONIC® or other external control e. g. PCC possible
- ▶ Display in litre, gallon or kilogram possible
- ▶ Semiautomatic filling in connection with a switching amplifier possible
- ▶ For Ex-application in zone 1

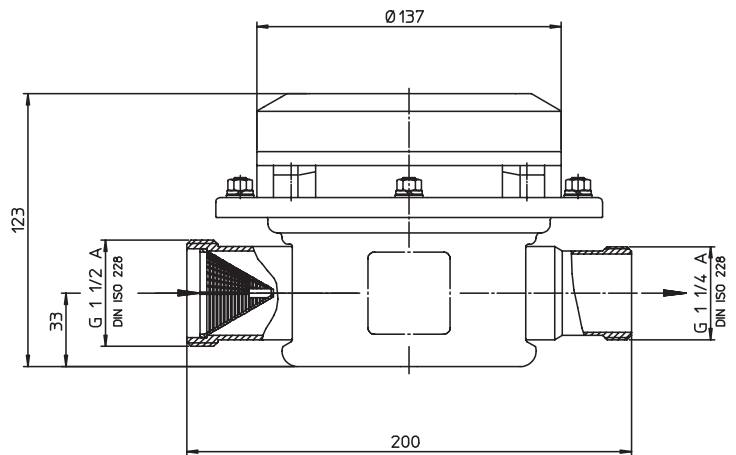


Technical data

	FMC 100
Versions also in	
Protection class	IP 54
Application area	For manual or semi-automatic filling
Flow rate GPM (l/min)	2.64 - 26.4 (10 - 100)
Measurement error of the flow rate	+/- 1.5 %
Repeatability	+/- 0.15 %
Operating pressure max.	87 psi (6 bar)
Viscosity max.	2,500 cPs
Material housing	Stainless Steel

Technical Data Sheet

FMC100 in Stainless Steel for Portable Use with Drum Pumps



Type	FMC 100/S/0/F	FMC 100/S/1/F	FMC 100/S/2/F
Flowrate	2.6-26.4 GPM (10-100 lpm)	2.6-26.4 GPM (10-100 lpm)	2.6-26.4 GPM (10-100 lpm)
Operating pressure	max. 87 PSI (6 bar)	max. 87 PSI (6 bar)	max. 87 PSI (6 bar)
Viscosity	max. 2,500 cPs	max. 2,500 cPs	max. 2,500 cPs
Operating temperature	max. 176°F (80°C)	max. 176°F (80°C)	max. 176°F (80°C)
Accuracy	± 1%	± 1%	± 1%
Mode of operation	Normal mode or auto mode in conjunction with an interface amplifier		
Inlet-outlet connections	G 1 1/2 A - G 1 1/4 A BSP 1 1/2" - BSP 1 1/4" male	G 1 1/2 A - G 1 1/4 A BSP 1 1/2" - BSP 1 1/4" male	G 1 1/2 A - G 1 1/4 A BSP 1 1/2" - BSP 1 1/4" male
	Connecting piece to drum pump not included with FMC		
Material: measuring chamber	PPS	PPS	PPS
Material: seal	EPDM (0)	FKM (1)	FFKM(3)
Weight	3.7 lbs (1.7 kg)	3.7 lbs (1.7 kg)	3.7 lbs (1.7 kg)
Part No.	10-A04 00 029	10-A04 00 031	10-A04 00 033

Version without digital display unit for use with quick action tap.

Flow meter with top cover and connecting cable, 16ft (5m) long.

Part No.	10-A04 00 042	10-A04 00 044	10-A04 00 080
----------	---------------	---------------	---------------

Flow meter with top cover and connecting cable, 16ft (5m) long.

Part No.	10-A04 00 053	10-A04 00 055	10-A04 00 057
----------	---------------	---------------	---------------

Accessories

Part No.			
Connecting piece to drum pump G 1 1/4 - G 1 1/2	10-959 06 059	10-959 06 059	10-959 06 059

Accessory for all models FMC

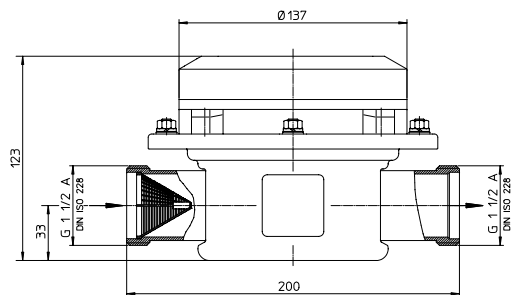


Protective boot for display unit against impurities and corrosive vapours

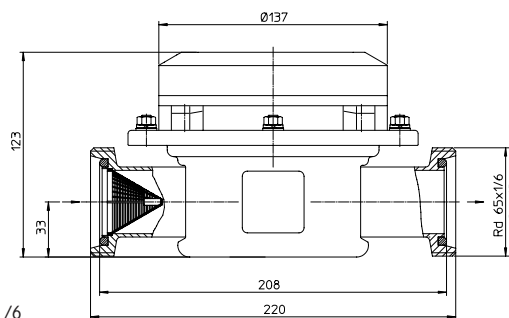
Part No. 10-001 42 017

Technical Data Sheet

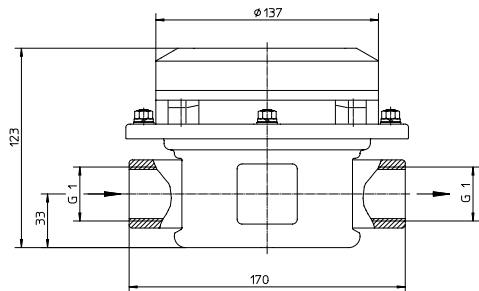
FMC100 in Stainless Steel for Fixed Installation into Pipework



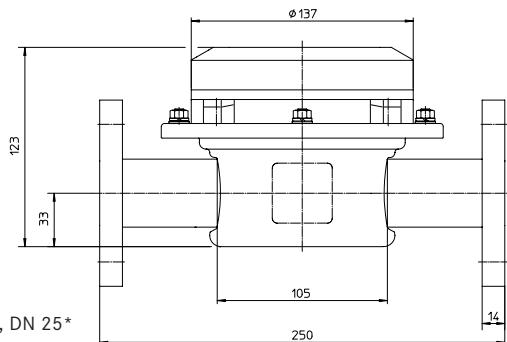
Connection G 1 1/2 A (BSP 1 1/2" male)



Connection Rd 65 x 1/6



Connection G 1 (BSP 1" female)



Connection PN 10, DN 25*

Type	FMC 100/S/0/A	FMC 100/S/1/A	FMC 100/S/2/A
Flowrate	2.6-26.4 GPM (10-100 lpm)	2.6-26.4 GPM (10-100 lpm)	2.6-26.4 GPM (10-100 lpm)
Operating pressure	max. 87 PSI (6 bar)	max. 87 PSI (6 bar)	max. 87 PSI (6 bar)
Viscosity	max. 2,500 cPs	max. 2,500 cPs	max. 2,500 cPs
Operating temperature	max. 176°F (80°C)	max. 176°F (80°C)	max. 176°F (80°C)
Accuracy	± 1%	± 1%	± 1%
Mode of operation	Normal mode or auto mode in conjunction with an interface amplifier		
Inlet-outlet connections	see dimensional drawings above		
Material: meter body	Stainless Steel 316 Ti (S)	Stainless Steel 316 Ti (S)	Stainless Steel 316 Ti (S)
Material: measuring chamber	PPS	PPS	PPS
Material: seal	EPDM (0)	FKM (1)	FEP (2)
Weight	3.7 lbs (1.7 kg)	3.7 lbs (1.7 kg)	3.7 lbs (1.7 kg)
Part No.	10-A04 00 013	10-A04 00 015	10-A04 00 078
Connection G 1 1/2 A	10-A04 00 071	10-A04 00 072	10-A04 00 073
Connection Rd 65 x 1/6	10-A04 00 023	10-A04 00 025	10-A04 00 027
Connection G 1	10-A04 00 085	10-A04 00 086	10-A04 00 087
Flange PN 10, DN 25*	10-A04 00 082	10-A04 00 083	10-A04 00 084

* Flange size: outer-Ø 115 mm, pitch circle-Ø 85 mm, 4 bores Ø 14 mm each

Version for use with external digital display unit

Flow meter with top cover and connecting cable, 16ft (5m) long.

Part No.			
Connection G 1 1/2 A	10-A04 00 074	10-A04 00 075	10-A04 00 076
Connection Rd 65 x 1/6	10-A04 00 059	10-A04 00 061	10-A04 00 063

External digital display unit / Part No.

for wall mounting	10-001 42 008	for mounting into a switchboard	10-001 42 009
-------------------	----------------------	---------------------------------	----------------------

Accessories

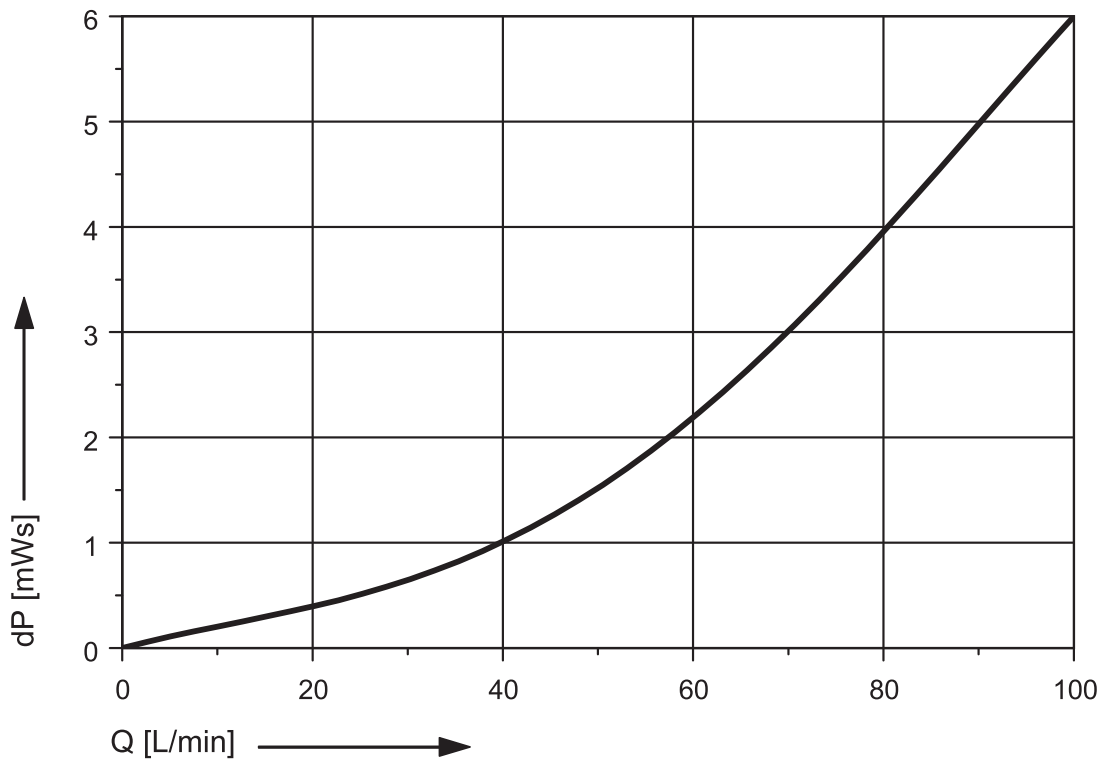
Part No.			
Pipe connection RV32-40/25	10-001 41 986	10-001 41 987	10-001 41 988
Pipe connection RV32-40/32	10-001 41 989	10-001 41 990	010-01 41 991

Technical Data Sheet

FMC100 Flow Meter in Stainless Steel Construction

Type FMC 100 Pressure Loss Chart

Values with water at 68°F (20)°C
Tolerance $\pm 5\%$



Technical Data Sheet

Application and installation examples



Shown in version for semi-automatic with one-touch start batch/metering ability.



Shown in version for manual batching & metering transfer applications.



Shown in version for semi-automatic with one-touch start batch/metering ability utilizing bottom outlet of IBC.



Shown in version for manual batching & totalizing being used with an air-operated double diaphragm pump.

FLUX PUMPS CORPORATION
300 Townpark Drive, Suite 130
Kennesaw, GA 30144, USA
Phone 800-367-3589
info@fluxpumpsusa.com
www.fluxpumpsusa.com