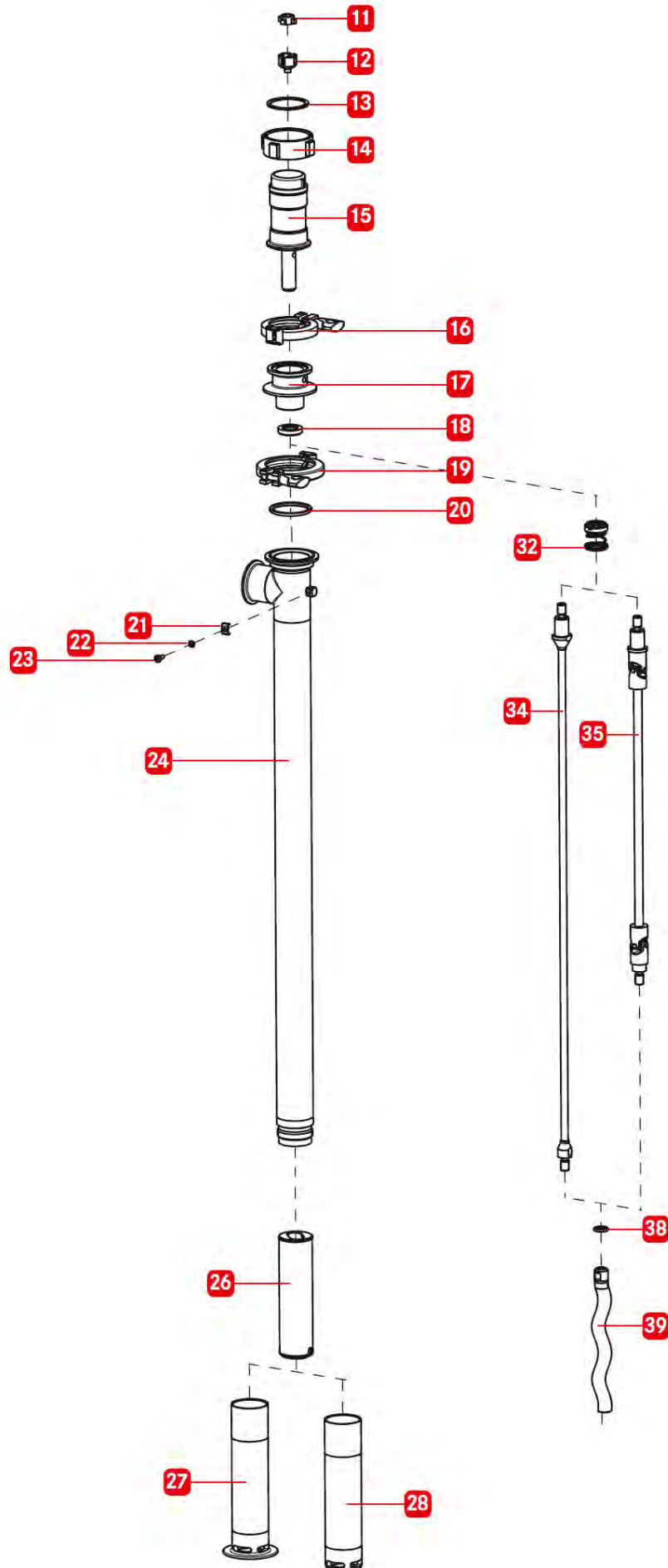


VISCOPOWER F570 Industrial

Spare parts list - Exploded view



More than just pumps



Type Code Position	1	2	3	4	5	6	7	8	9	10	11	12	
Type Code	F570	N.A.	N.A.	400	FKMo	FKM	CP	TS	R17	NBR	FX	N.A.	
	F580	FOOD	Ex	700	FKMc	FFKM	SP	CS	R33	FKM	G7L	RC	
	--	3A	--	1000	FFKMc	NBR	ISP	--	R52	PTFE	G16	--	
	--	--	--	1200	--	--	--	--	--	--	--	G16L	--
	--	--	--	1500	--	--	--	--	--	--	--	--	--

Position	Meaning	Type Code	Explanation
1	Type	F570	Gearbox version
		F580	Motor flange version
2	Application	N.A.	Industrial model
		FOOD	Compliant EC/CE 1935/2004 & FDA CFR 21
		3A	3A Certification
3	Hazardous area	N.A.	Not for use in explosion proof areas
		Ex	ATEX approved for use in explosion proof areas
4	Immersion length	400	16" (400mm)
		700	27" (700mm)
		1000	39" (1,000mm)
		1200	47" (1,200mm)
		1500	60" (1,500mm)
5	Mechanical seal	FKMo	Mechanical seal w/open design
		FKMc	Mechanical seal w/closed design
		FFKMc	Mechanical seal w/closed design
6	Seal o-rings	FKM	FKM
		FFKM	FFKM
		NBR	NBR
7	Stator housing	CP	Clamped connection
		SP	Standard suction protection
		ISP	inliner suction protection
8	Shaft	TS	Torsion shaft
		CS	Cardan shaft
9	Rotor/stator geometry	R17	R17 (17 ml/rev displacement)
		R33	R33 (33 ml/rev displacement)
		R52	R52 (52 ml/rev displacement)
10	Stator material	NBR	NBR white
		FKM	FKM black
		PTFE	PTFE
11	Motor interface	FX	Motor flange for asynchronous motors
		G7L	Gearbox version single-stage w/anti-rotation device
		G16	Gearbox version double-stage
		G16L	Gearbox version double-stage w/anti-rotation device
12	Speed sensor	N.A.	Without speed sensor
		RC	With speed sensor

VISCOPOWER F570 Industrial

Spare parts list



More than just pumps

Position	Description	Type Code	Part Number
11	Coupling star	F570	10-41014028
12	Coupling cage	F570	10-42051275
13	Circlip	F570	10-91880002
14	Union nut	F570	10-90790001
15	Planetary gearbox single-stage incl pos. 11, 12, 13 & 14	G7L	11-00000220
	Planetary gearbox double-stage incl pos. 11, 12, 13 & 14	G16	11-00000221
	Planetary gearbox single-stage w/anti-rotation incl pos. 11, 12, 13 & 14	G16L	11-00000222
15	Planetary gearbox single-stage w/flange incl pos. 11, 12, 13, 14, 16, 17 & 19	G7L	11-00000013
	Planetary gearbox double-stage w/flange incl pos. 11, 12, 13, 14, 16, 17 & 19	G16	11-00000014
	Planetary gearbox single-stage w/flange & anti-rotation incl pos. 11, 12, 13, 14, 16, 17 & 19	G16L	11-00000015
16	Hinged clamp	All	10-55024376
17	Flange w/seal carrier	All	11-00000016
18	Included with pos. 32 & 33	--	--
19	Hinged clamp	All	11-00000176
20	O-ring NBR black	NBR	11-00000080
	O-ring FKM green	FKM	11-00000081
	O-ring FFKM black	FFKM	11-00000082
21	Sheet for equipotential bonding	Ex	10-90974000
22	Spring washer	Ex	10-90975002
23	Countersunk screw	Ex	10-90074005

Position	Description	Type Code	Part Number
24	Pump tube 27" (700mm) w/2" tri-clamp outlet	N.A. 700 SP/ISP	11-00000059
	Pump tube 39" (1,000mm) w/2" tri-clamp outlet	N.A. 1000 SP/ISP	11-00000060
	Pump tube 47" (1,200mm) w/2" tri-clamp outlet	N.A. 1200 SP/ISP	11-00000061
	Pump tube 60" (1,500mm) w/2" tri-clamp outlet	N.A. 1500 SP/ISP	11-00000062
	Pump tube 27" (700mm) w/2" tri-clamp outlet w/ATEX approval incl pos. 21, 22 & 23	Ex 700 SP/ISP	11-00000073
	Pump tube 39" (1,000mm) w/2" tri-clamp outlet w/ATEX approval incl pos. 21, 22 & 23	Ex 1000 SP/ISP	11-00000074
	Pump tube 47" (1,200mm) w/2" tri-clamp outlet w/ATEX approval incl pos. 21, 22 & 23	Ex 1200 SP/ISP	11-00000075
	Pump tube 60" (1,500mm) w/2" tri-clamp outlet w/ATEX approval incl pos. 21, 22 & 23	Ex 1500 SP/ISP	11-00000076

Position	Description	Type Code	Part Number
26	Stator R17 NBR white	R17 NBR	11-00000031
	Stator R17 FKM black	R17 FKM	11-00000032
	Stator R17 PTFE	R17 PTFE	11-00000033
	Stator R17 PTFE w/ATEX approval	Ex R17 PTFE	11-00000034
	Stator R33 NBR white	R33 NBR	11-00000035
	Stator R33 FKM black	R33 FKM	11-00000036
	Stator R33 PTFE	R33 PTFE	11-00000037
	Stator R33 PTFE w/ATEX approval	Ex R33 PTFE	11-00000038
	Stator R52 NBR white	R52 NBR	11-00000039
	Stator R52 FKM black	R52 FKM	11-00000040
	Stator R52 PTFE	R52 PTFE	11-00000041
	Stator R52 PTFE w/ATEX approval	Ex R52 PTFE	11-00000042

Position	Description	Type Code	Part Number
27	Stator housing with inliner suction protection	ISP	11-00000147
28	Stator housing standard suction protection	SP	11-00000145

VISCOPOWER F570 Industrial

Spare parts list



More than just pumps

Position	Description	Type Code	Part Number
32	Mechanical seal, open, SiC/SiC/FKM 145 PSIG (10 bar) max incl pos. 18	N.A. FKMo	11-00000100
33	Mechanical seal, closed, SiC/SiC/FFKM 217 PSIG (15 bar) max incl pos. 18	N.A FFKMc	11-00000102

Position	Description	Type Code	Part Number
34	Torsion Shaft 27" (700mm) for open mechanical seal	700 FKMo TS	11-00000127
	Torsion Shaft 39" (1000mm) for open mechanical seal	1000 FKMo TS	11-00000128
	Torsion Shaft 47" (1200mm) for open mechanical seal	1200 FKMo TS	11-00000129
	Torsion Shaft 60" (1500mm) for open mechanical seal	1500 FKMo TS	11-00000130
35	Cardan Shaft 16" (400mm) for open mechanical seal	400 FKMo CS	11-00000123
	Cardan Shaft 27" (700mm) for open mechanical seal	700 FKMo CS	11-00000124
36	Torsion Shaft 27" (700mm) for closed mechanical seal	700 FKM/FFKM TS	11-00000131
	Torsion Shaft 39" (1000mm) for closed mechanical seal	1000 FKM/FFKM TS	11-00000132
	Torsion Shaft 47" (1200mm) for closed mechanical seal	1200 FKM/FFKM TS	11-00000133
	Torsion Shaft 60" (1500mm) for closed mechanical seal	1500 FKM/FFKM TS	11-00000134
37	Cardan Shaft 16" (400mm) for closed mechanical seal	400 FKM/FFKM CS	11-00000125
	Cardan Shaft 27" (700mm) for closed mechanical seal	700 FKM/FFKM CS	11-00000126

Position	Description	Type Code	Part Number
38	O-ring NBR black	NBR	11-00000084
	O-ring FKM green	FKM	11-00000085
	O-ring FFKM black	FFKM	11-00000086

Position	Description	Type Code	Part Number
39	Rotor R17	R17	11-00000020
	Rotor R17 w/ATEX approval	Ex R17	11-00000021
	Rotor R33	R33	11-00000022
	Rotor R33 w/ATEX approval	Ex R33	11-00000024
	Rotor R52	R52	11-00000025
	Rotor R52 w/ATEX approval	Ex R52	11-00000027

FLUX PUMPS CORPORATION
 300 Townpark Drive, Suite 130
 Kennesaw, GA 30144, USA
 Phone 800-367-3589
info@fluxpumpsusa.com
www.fluxpumpsusa.com